

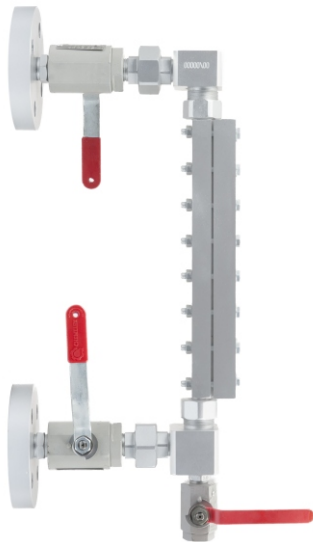


figure **720**

ends form flanged straight



## LIQUID LEVEL INDICATOR WITH REFLEXIVE GLASS



body material	nominal pressure	size	max. temperature	ex.index
<b>G</b> carbon steel	<b>F</b> 63 bar	<b>0-V</b>	<b>250°C</b>	<b>720</b>
<b>M</b> acid resistant steel	<b>F</b> 63 bar	<b>0-V</b>	<b>250°C</b>	<b>720CrNi</b>

### FEATURES

- connection flanges of liquid level indicator heads are drilled at 63 as for DN 20 and executed with sealing surfaces type E with spline according to PN EN 1092-1
- inlet hole in head  $\Phi$  15 mm.
- ability to adapt of liquid level indicator to other than the standard length

### APPLICATION

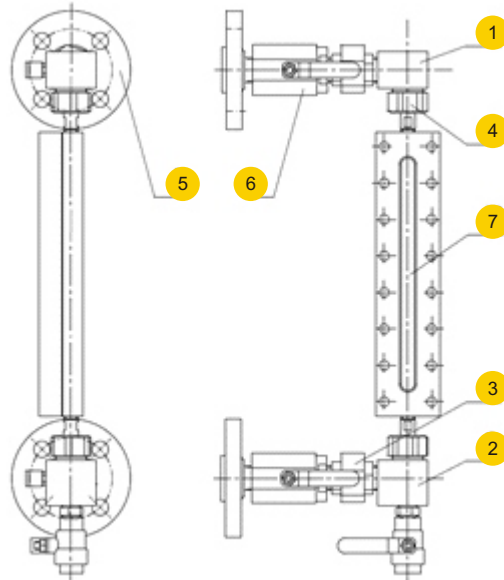
- flanged liquid level indicator with cover 720 is non-tilting liquid level indicator, design to showing of liquid level in pressure tanks about working pressure to 63 bar. It can be applied as boiler liquid level indicator in boilers about working temperature to 250°C
- for vapor with pressure over 35 bar use type with transparent glass and Mica washer

Data given can be changed without notice.



figure	<b>720</b>
ends form	flanged straight

## MATERIALS



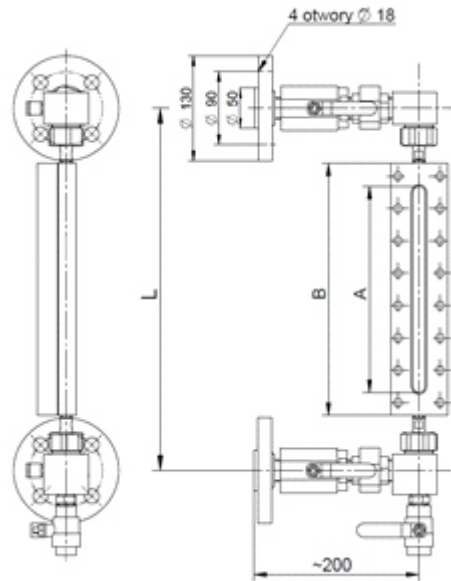
	body material	G	M
	type	44, 45, 46, 47, 48, 49 (ex.720)	44, 45, 46, 47, 48, 49 (ex.720CrNi)
1	upper head	P355NH	X6CrNiTi18-10
2	bottom head	P355NH	X6CrNiTi18-10
3	connection	depending on the type	
4	nut	S235JR	X6CrNiTi18-10
5	flange	13CrMo4-5	X6CrNiTi18-10
6	cover plate	depending on the type	
7	cover	C45	X6CrNiTi18-10
	max temperature	250°C	

Data given can be changed without notice.



figure	<b>720</b>
ends form	flanged straight

## DIMENSIONS

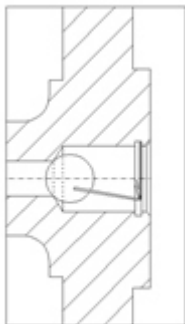


body material G/M		type 44, 45, 46, 47, 48, 49 (ex.720/720CrNi)				used cover	(ex.703/703CrNi) PN 25
size	axle base (L)	length of sight-glass (A)	dimensions of glass	length of cover (B)			
mm							kg
0	320	140	165x34x17	192	14,4		4,4
I	360	195	220x34x17	232	15,2		5,2
II	440	255	280x34x17	312	17,0		7,0
III	480	295	320x34x17	352	17,8		7,8
IV	520	315	340x34x17	392	18,7		8,7
V	560	345	370x34x17	432	19,7	9,7	

## CHANGE IN TYPE

Change of execution of liquid level indicator from right execution onto left ( or inversely ) is done, through slackening of nut in connection [3] as well as turn of flange together with ball valve with 180° and turn of drain cock.

## WITH ANTI-OUTFLOW PROTECTION



In case of breakage of glass balls cut off the flow factor.

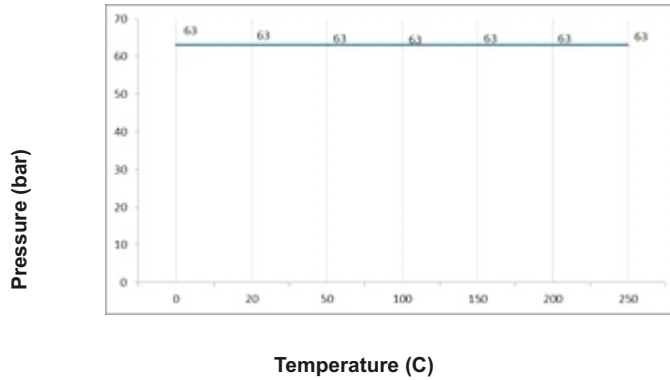
Data given can be changed without notice.



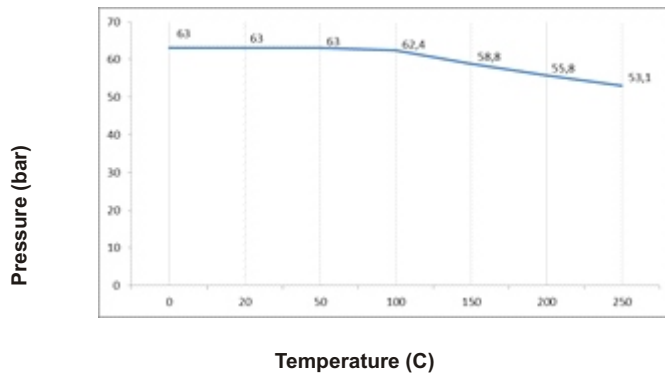
figure	720
ends form	flanged straight



## PRESSURE-TEMPERATURE RATINGS



Allowed working conditions range  
PN 63 P355NH, 13CrMo4-5



Allowed working conditions range  
PN 63 X6CrNiTi18-10

Temperatura / *Temperature ( C )*  
Graduation pressure on temperature is also dependent on the type of used ball valves .



figure	<b>720</b>
ends form	flanged straight



## TYPES

figure	body material	size	nominal pressure PN	Type
720	G carbon steel P355NH	0-V	F 63bar	44 • type with ball valves Tmax 120 °C
				45 • type with ball valves, with anti-outflow protection Tmax 120 °C
				46 • type with ball valves Tmax 150 °C
				47 • type with ball valves, with anti-outflow protection Tmax 150 °C
				46 • type with ball valves Tmax 250 °C
				47 • type with ball valves, with anti-outflow protection Tmax 250 °C
				M acid resistant steel X6CrNiTi18-10
	45 • type with ball valves, with anti-outflow protection Tmax 120 °C			
	46 • type with ball valves Tmax 150 °C			
	47 • type with ball valves, with anti-outflow protection Tmax 150 °C			
	46 • type with ball valves Tmax 250 °C			
	47 • type with ball valves, with anti-outflow protection Tmax 250 °C			

Data given can be changed without notice.

**ZETKAMA**  
Group  
Edition 01/2013



figure	720
ends form	flanged straight

## ORDERING

To place an order please use our product number (index)



### ORDER EXAMPLE

